



GATE PREVIOUS YEAR SOLVED PAPERS

**Computer Science Engineering
Previous Year Solved Papers**

GATEFORUM Pioneers in Digital courses for GATE since 2008 has long history of training students through innovative courses. Currently GATEFORUM offers a wide range of courses from eGATE, GATE Online, Gdrive to Online TarGATE. Since inception, we have trained more 3,00,000 students since inception.

For more details visit gateforumonline.com

GENERAL APTITUDE

Q. No. 1 - 5 Carry One Mark Each

1. The _____ is too high for it to be considered _____.
 (A) fair / fare (B) faer / fair (C) fare / fare (D) fare / fair

Answer: (D)

[Click here to watch video explanation](#)

2. A function $y(x)$ is defined in the interval $[0, 1]$ on the x -axis as

$$y(x) = \begin{cases} 2 & \text{if } 0 \leq x < \frac{1}{3} \\ 3 & \text{if } \frac{1}{3} \leq x < \frac{3}{4} \\ 1 & \text{if } \frac{3}{4} \leq x \leq 1 \end{cases}$$

Which one of the following is the area under the curve for the interval $[0, 1]$ on the x -axis?

- (A) $\frac{5}{6}$ (B) $\frac{6}{5}$ (C) $\frac{13}{6}$ (D) $\frac{6}{13}$

Answer: (C)

[Click here to watch video explanation](#)

3. Let r be a root of equation $x^2 + 2x + 6 = 0$
 Then the value of expression $(r+2)(r+3)(r+4)(r+5)$ is
 (A) 51 (B) -51 (C) 126 (D) -126

Answer: (D)

[Click here to watch video explanation](#)

4. Given below are four statements.
Statement 1: All students are inquisitive.
Statement 2: Some students are inquisitive.
Statement 3: No student is inquisitive.
Statement 4: Some students are not inquisitive.

From the given four statements, find the two statements that **CANNOT BE TRUE** simultaneously, assuming that there is at least one student in the class.

- (A) Statement 1 and Statement 3 (B) Statement 1 and Statement 2
 (C) Statement 2 and Statement 4 (D) Statement 3 and Statement 4

Answer: (A)

[Click here to watch video explanation](#)

5. A palindrome is a word that reads the same forwards and backwards. In a game of words, a player has the following two plates painted with letters.



From the additional plates given in the options, which one of the combinations of additional plates would allow the player to construct a five-letter palindrome. The player should use all the five plates exactly once. The plates can be rotated in their plane.

- (A) (B)
 (C) (D)

Answer: (B)

[Click here to watch video explanation](#)

Q.No. 6-10 Carry Two Marks Each

6. Some people believe that “what gets measured, improves”. Some others believe that “what gets measured, gets gamed”. One possible reason for the difference in the beliefs is the work culture in organizations. In organizations with good work culture, metrics help improve outcomes. However, the same metrics are counterproductive in organizations with poor work culture.

Which one of the following is the CORRECT logical inference based on the information in the above passage?

- (A) Metrics are useful in organizations with poor work culture
 (B) Metrics are useful in organizations with good work culture
 (C) Metrics are always counterproductive in organizations with good work culture
 (D) Metrics are never useful in organizations with good work culture

Answer: (B)

[Click here to watch video explanation](#)

7. In a recently conducted national entrance test, boys constituted 65% of those who appeared for the test. Girls constituted the remaining candidates and they accounted for 60% of the qualified candidates. Which one of the following is the correct logical inference based on the information provided in the above passage?

- (A) Equal number of boys and girls qualified
 (B) Equal number of boys and girls appeared for the test
 (C) The number of boys who appeared for the test is less than the number of girls who appeared
 (D) The number of boys who qualified the test is less than the number of girls who qualified

Answer: (D)

[Click here to watch video explanation](#)

8. A box contains five balls of same size and shape. Three of them are green coloured balls and two of them are orange coloured balls. Balls are drawn from the box one at a time. If a green ball is drawn, it is not replaced. If an orange ball is drawn, it is replaced with another orange ball.

First ball is drawn. What is the probability of getting an orange ball in the next draw?

- (A) $\frac{1}{2}$ (B) $\frac{8}{25}$ (C) $\frac{19}{50}$ (D) $\frac{23}{50}$

Answer: (D)

[Click here to watch video explanation](#)

9. The corners and mid-points of the sides of a triangle are named using the distinct letters P, Q, R, S, T and U, but not necessarily in the same order. Consider the following statements:

- The line joining P and R is parallel to the line joining Q and S.
- P is placed on the side opposite to the corner T.
- S and U cannot be placed on the same side.

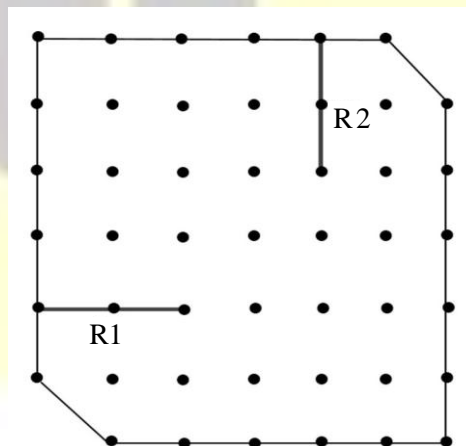
Which one of the following statements is correct based on the above information?

- (A) P cannot be placed at a corner (B) S cannot be placed at a corner
(C) U cannot be placed at a mid-point (D) R cannot be placed at a corner

Answer: (B)

[Click here to watch video explanation](#)

10. A plot of land must be divided between four families. They want their individual plots to be similar in shape, not necessarily equal in area. The land has equally spaced poles, marked as dots in the below figure. Two ropes, R1 and R2, are already present and cannot be moved. What is the least number of additional straight ropes needed to create the desired plots? A single rope can pass through three poles that are aligned in a straight line.



- (A) 2 (B) 4 (C) 5 (D) 3

Answer: (D)

[Click here to watch video explanation](#)

COMPUTER SCIENCE & INFORMATION TECHNOLOGY

Q. No. 11 to 35 Carry One Mark Each

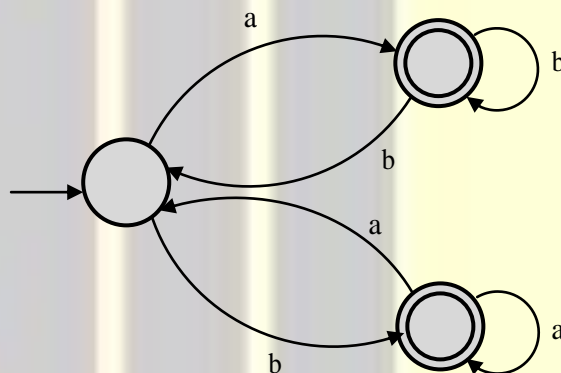
11. Which one of the following statements is TRUE for all positive functions $f(n)$?

- (A) $f(n^2) = \theta(f(n)^2)$ when $f(n)$ is a polynomial
- (B) $f(n^2) = o(f(n)^2)$
- (C) $f(n^2) = O(f(n)^2)$, when $f(n)$ is an exponential function
- (D) $f(n^2) = \Omega(f(n)^2)$

Answer: (A)

[Click here to watch video explanation](#)

12. Which one of the following regular expressions correctly represents the language of the finite automaton given below?



- (A) $ab^*bab^*+ba^*aba^*$
- (B) $(ab^*b)ab^*+(ba^*a)^*ba^*$
- (C) $(ab^*b+ba^*a)(a^*+b^*)$
- (D) $(ba^*a+ab^*b)(ab^*+ba^*)$

Answer: (D)

[Click here to watch video explanation](#)

13. Which one of the following statements is TRUE?

- (A) The LALR (1) parser for a grammar G cannot have reduce-reduce conflict if the LR(1) parser for G does not have reduce-reduce conflict.
- (B) Symbol table is accessed only during the lexical analysis phase.
- (C) Data flow analysis is necessary for run-time memory management
- (D) LR(1) parsing is sufficient for deterministic context-free languages.

Answer: (D)

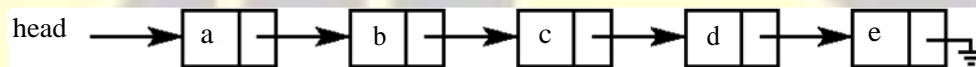
[Click here to watch video explanation](#)

14. In a relational data model, which one of the following statements is TRUE?
- (A) A relation with only two attributes is always in BCNF.
 - (B) If all attributes of a relation are prime attributes, then the relation is in BCNF.
 - (C) Every relation has at least one non-prime attribute.
 - (D) BCNF decompositions preserve functional dependencies.

Answer: (A)

[Click here to watch video explanation](#)

15. Consider the problem of reversing a singly linked list. To take an example, given the linked list below, the reversed linked list should look like
- Which one of the following statements is TRUE about the time complexity of algorithms that solve the above problem in $O(1)$ space?



the reversed linked list should look like



- (A) The best algorithm for the problem takes $\theta(n)$ time in worst case.
- (B) The best algorithm for the problem takes $\theta(n \log n)$ time in the worst case
- (C) The best algorithm for the problem takes $\theta(n^2)$ time in the worst case
- (D) It is not possible to reverse a singly linked list in $O(1)$ space.

Answer: (A)

[Click here to watch video explanation](#)

16. Suppose we are given n keys, m has table slots, and two simple uniform hash functions h_1 and h_2 . Further suppose our hashing scheme uses h_1 for the odd keys and h_2 for the even keys. What is the expected number of keys in a slot?

- (A) $\frac{m}{n}$
- (B) $\frac{n}{m}$
- (C) $\frac{2n}{m}$
- (D) $\frac{n}{2m}$

Answer: (B)

[Click here to watch video explanation](#)

17. Which one of the following facilitates transfer of bulk data from hard disk to main memory with the highest throughput?
- (A) DMA based I/O transfer (B) Interrupt driven I/O transfer
(C) Polling based I/O transfer (D) Programmed I/O transfer

Answer: (A) [Click here to watch video explanation](#)

18. Let R1 and R2 be two 4-bit registers that store numbers in 2's complement form. For the operation R1+R2, which one of the following values of R1 and R2 gives an arithmetic overflow?
- (A) R1 = 1011 and R2 = 1110 (B) R1 = 1100 and R2 = 1010
(C) R1 = 0011 and R2 = 0100 (D) R1 = 1001 and R2 = 1111

Answer: (B) [Click here to watch video explanation](#)

19. Consider the following threads, T₁, T₂, and T₃ executing on a single processor, synchronized using three binary semaphore variables, S₁, S₂, and S₃, operated upon using standard wait() and signal(). The threads can be context switched in any order and at any time.

T ₁	T ₂	T ₃
while(true){ wait(S ₃); print("C"); signal(S ₂); }	while(true){ wait(S ₁); print("B"); signal(S ₃); }	while(true){ wait(S ₂); print("A"); signal(S ₁); }

Which initialization of the semaphores would print the sequence BCABCABCA....?

- (A) S₁ = 1; S₂ = 1; S₃ = 1 (B) S₁ = 1; S₂ = 1; S₃ = 0
(C) S₁ = 1; S₂ = 0; S₃ = 0 (D) S₁ = 0; S₂ = 1; S₃ = 1

Answer: (C) [Click here to watch video explanation](#)

20. Consider the following two statements with respect to the matrices A_{m×n}, B_{n×m}, C_{n×n} and D_{n×n}

Statement 1: tr(AB) = tr(BA)

Statement 2: tr(CD) = tr(DC)

where tr() represents the trace of a matrix. Which one of the following holds?

- (A) Statement 1 is correct and Statement 2 is wrong.
(B) Statement 1 is wrong and Statement 2 is correct.
(C) Both Statement 1 and Statement 2 are correct.
(D) Both Statement 1 and Statement 2 are wrong.

Answer: (C) [Click here to watch video explanation](#)

21. What is printed by the following ANSI program?

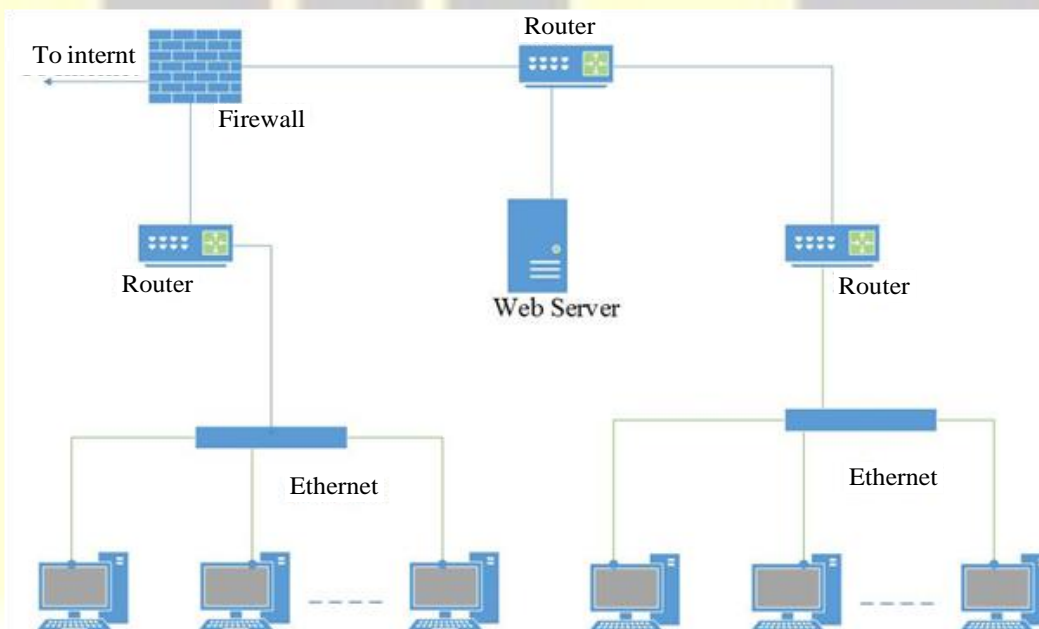
```
#include <stdio.h>
int main(int argc, char *argv[])
{
int x = 1, z[2] = {10, 11};
int *p = NULL;
p = &x;
*p = 10;
p = &z[1];
*(&z[0] + 1) += 3;
printf("%d, %d, %d\n", x, z[0], z[1]);
return 0;
}
```

- (A) 1, 10, 11 (B) 1, 10, 14 (C) 10, 14, 11 (D) 10, 10, 14

Answer: (D)

[Click here to watch video explanation](#)

22. Consider an enterprise network with two Ethernet segments, a web server and a firewall, connected via three routers as shown below.



What is the number of subnets inside the enterprise network?

- (A) 3 (B) 12 (C) 6 (D) 8

Answer: (C)

[Click here to watch video explanation](#)

23. Which of the following statements is / are TRUE ?
- (A) Every subset of a recursively enumerable language is recursive.
 - (B) If a language L and its complement \bar{L} are both recursively enumerable, then L must be recursive.
 - (C) Complement of a context-free language must be recursive
 - (D) If L_1 and L_2 are regular then $L_1 \cap L_2$ must be deterministic context – free

Answer: (B, C, D)

[Click here to watch video explanation](#)

24. Let WB and WT be two set associative cache organizations that use LRU algorithm for cache block replacement. WB is a write back cache and WT is a write through cache. Which of the following statements is/are FALSE?
- (A) Each cache block in WB and WT has a dirty bit.
 - (B) Every write hit in WB leads to a data transfer from cache to main memory.
 - (C) Eviction of a block from WT will not lead to data transfer from cache to main memory.
 - (D) A read miss in WB will never lead to eviction of a dirty block from WB.

Answer: (A, B, D)

[Click here to watch video explanation](#)

25. Consider the following three relations in a relational database.
Employee (eId, Name), Brand (bId, bName), Own(eId, bId)
Which of the following relational algebra expressions return the set of eIds who own all the brands?
- (A) $\Pi_{eId} \Pi_{eId, bId} (Own) / \Pi_{bId} (Brand)$
 - (B) $\Pi_{eId} (Own) - \Pi_{eId} ((\Pi_{eId} (Own) \times \Pi_{bId} (Brand)) - \Pi_{eId, bId} (Own))$
 - (C) $\Pi_{eId} (\Pi_{eId, bId} (Own) / \Pi_{bId} (Own))$
 - (D) $\Pi_{eId} (\Pi_{eId} ((Own) \times \Pi_{bId} (Own)) / \Pi_{bId} (Brand))$

Answer: (A, B)

[Click here to watch video explanation](#)

26. Which of the following statements is/are TRUE with respect to deadlocks?
- (A) Circular wait is a necessary condition for the formation of deadlock.
 - (B) In a system where each resource has more than one instance, a cycle in its wait-for graph indicates the presence of a deadlock.
 - (C) If the current allocation of resources to processes leads the system to unsafe state, then deadlock will necessarily occur.

(D) In the resource-allocation graph of a system, if every edge is an assignment edge, then the system is not in deadlock state.

Answer: (A, D)

[Click here to watch video explanation](#)

27. Which of the following statements is/are TRUE for a group G ?

(A) If for all $x, y \in G, (xy)^2 = x^2y^2$, then G is commutative.

(B) If for all $\in G, x^2 = 1$, then G is commutative, Here, 1 is the identity element of G .

(C) If the order G is 2, then G is commutative.

(D) If G is commutative, then a subgroup of G need not be commutative.

Answer: (A, B, C)

[Click here to watch video explanation](#)

28. Suppose a binary search tree with 1000 distinct elements is also a complete binary tree. The tree is stored using the array representation of binary heap trees. Assuming that the array indices start with 0, the 3rd largest element of the tree is stored at index _____

Answer: (509 to 509)

[Click here to watch video explanation](#)

29. Consider the augmented grammar with $\{+, *, (,), id\}$ as the set of terminals.

(A) $S' \rightarrow S$

(B) $S \rightarrow S + R \mid R$

(C) $R \rightarrow R * P \mid P$

(D) $P \rightarrow (S) \mid id$

If I_0 is the set of two LR(0) items $\{[S' \rightarrow S], [S \rightarrow S + R]\}$, then goto (closure(I_0)) contains exactly _____ items.

Answer: (5 to 5)

[Click here to watch video explanation](#)

30. Consider a simple undirected graph of 10 vertices. If the graph is disconnected, then the maximum number of edges it can have is _____.

Answer: (36 to 36)

[Click here to watch video explanation](#)

31. Consider a relation $R(A, B, C, D, E)$ with the following three functional dependencies.

$AB \rightarrow C$; $BC \rightarrow D$; $C \rightarrow E$;

The number of superkeys in the relation R is _____.

Answer: (8 to 8)

[Click here to watch video explanation](#)

32. The number of arrangements of six identical balls in three identical bins is

Answer: (7 to 7)

[Click here to watch video explanation](#)

33. A cache memory that has a hit rate of 0.8 has an access latency 10ns and miss penalty 100ns. An optimization is done on the cache to reduce the miss rate. However, the optimization results in an increase of cache access latency to 15 ns, whereas the miss penalty is not affected. The minimum hit rate (rounded off to two decimal places) needed after the optimization such that it should not increase the average memory access time is _____

Answer: (0.85 to 0.85)

[Click here to watch video explanation](#)

34. The value of the following limit is _____

$$\lim_{x \rightarrow 0^+} \frac{\sqrt{x}}{1 - e^{-2\sqrt{x}}}$$

Answer: (-0.5 to -0.5)

[Click here to watch video explanation](#)

35. Consider the resolution of the domain name `www.gate.org.in` by a DNS resolver. Assume that no resource records are cached anywhere across the DNS servers and that iterative query mechanism is used in the resolution. The number of DNS query-response pairs involved in completely resolving the domain name is _____.

Answer: (4 to 4)

[Click here to watch video explanation](#)

Q. No. 36 to 65 Carry Two Marks Each

36. Which one of the following is the closed form for the generating function of the sequence $\{a_n\}_{n \geq 0}$ defined below?

$$a_n = \begin{cases} n+1, & n \text{ is odd} \\ 1, & \text{otherwise} \end{cases}$$

(A) $\frac{x(1+x^2)}{(1-x^2)^2} + \frac{1}{1-x}$

(B) $\frac{x(3-x^2)}{(1-x^2)^2} + \frac{1}{1-x}$

(C) $\frac{2x}{(1-x^2)^2} + \frac{1}{1-x}$

(D) $\frac{x}{(1+x^2)^2} + \frac{1}{1-x}$

Answer: (A)

[Click here to watch video explanation](#)



GATE REFRESHER COURSE

Computer Science Engineering

GATEFORUM Pioneers in Digital courses for GATE since 2008 offers **GATE refresher course** giving you access to video solutions for previous 11 years GATE questions and Topic-wise formula Compendium (Handbook).

**Enroll now and get 20% discount use
Promo Code **GATEPAPERS****

For more details visit gateforumonline.com

37. Consider a simple undirected unweighted graph with at least three vertices. If A is the adjacency matrix of the graph, then the number of 3-cycles in the graph is given by the trace of
- (A) A^3 (B) A^3 divided by 2
(C) A^3 divided by 3 (D) A^3 divided by 6

Answer: (D)

[Click here to watch video explanation](#)

38. Which one of the following statements is FALSE?
- (A) The TLB performs an associative search in parallel on all its valid entries using page number of incoming virtual address.
- (B) If the virtual address of a word given by CPU has a TLB hit, but the subsequent search for the word results in a cache miss, then the word will always be present in the main memory.
- (C) The memory access time using a given inverted page table is always same for all incoming virtual addresses.
- (D) In a system that uses hashed page tables, if two distinct virtual addresses V_1 and V_2 map to the same value while hashing, then the memory access time of these addresses will not be the same.

Answer: (C)

[Click here to watch video explanation](#)

39. Let $R_i(z)$ and $W_i(z)$ denote read and write operations on a data element z by a transaction T_i , respectively. Consider the schedule S with four transactions

$S : R_4(x)R_2(x)R_3(x)R_1(y)W_1(y)W_2(x)W_3(y)R_4(y)$

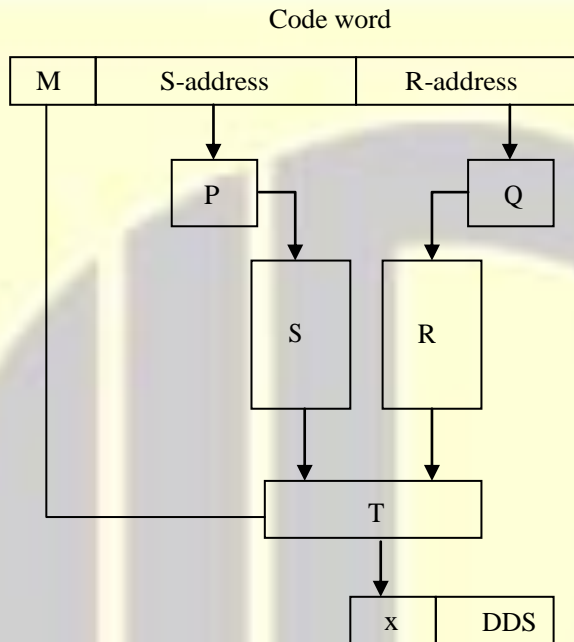
Which one of the following serial schedules is conflict equivalent to S ?

- (A) $T_1 \rightarrow T_3 \rightarrow T_4 \rightarrow T_2$ (B) $T_1 \rightarrow T_4 \rightarrow T_3 \rightarrow T_2$
(C) $T_4 \rightarrow T_1 \rightarrow T_3 \rightarrow T_2$ (D) $T_3 \rightarrow T_1 \rightarrow T_4 \rightarrow T_2$

Answer: (A)

[Click here to watch video explanation](#)

40. Consider a digital display system (DDS) shown in the figure that displays the contents of register X. A 16-bit code word is used to load a word in X, either from S or from R. S is a 1024-word memory segment and R is a 32-word register file. Based on the value of mode bit M, T selects an input word to load in X. P and Q interface with the corresponding bits in the code word to choose the addressed word. Which one of the following represents the functionality of P, Q, and T?



- (A) P is 10:1 multiplexer; Q is 5:1 multiplexer; T is 2:1 multiplexer
 (B) P is $10:2^{10}$ decoder; Q is $5:2^5$ decoder; T is 2:1 encoder
 (C) P is $10:2^{10}$ decoder; Q is $5:2^5$ decoder; T is 2:1 multiplexer
 (D) P is 1:10 de-multiplexer; Q is 1:5 de-multiplexer; T is 2:1 multiplexer

Answer: (C)

[Click here to watch video explanation](#)

41. Consider three floating point numbers A, B and C stored in registers R_A , R_B and R_C , respectively as per IEEE-754 single precision floating point format. The 32-bit content stored in the registers (in hexadecimal form) are as follows.

$R_A = 0 \times C1400000$	$R_B = 0 \times 42100000$	$R_C = 0 \times 41400000$
---------------------------	---------------------------	---------------------------

Which one of the following is FALSE?

- (A) $A + C = 0$ (B) $C = A + B$ (C) $B = 3C$ (D) $(B - C) > 0$

Answer: (B)

[Click here to watch video explanation](#)

42. Consider four processes P, Q, R, and S scheduled on a CPU as per round robin algorithm with a time quantum of 4 units. The processes arrive in the order P, Q, R, S, all at time $t = 0$. There is exactly one context switch from S to Q, exactly one context switch from R to Q, and exactly two context switches from Q to R. There is no context switch from S to P. Switching to a ready process after the termination of another process is also considered a context switch. Which one of the following is **NOT** possible as CPU burst time (in time units) of these processes?
- (A) P = 4, Q = 10, R = 6, S = 2 (B) P = 2, Q = 9, R = 5, S = 1
(B) P = 4, Q = 12, R = 5, S = 4 (D) P = 3, Q = 7, R = 7, S = 3

Answer: (D)

[Click here to watch video explanation](#)

43. What is printed by the following ANSI C program?

```
#include <stdio. h>
int main(int argc, char *argv[])
{
    int a[3][3][3] =
        {{1, 2, 3, 4, 5, 6, 7, 8, 9},
         {10, 11, 12, 13, 14, 15, 16, 17, 18},
         {19, 20, 21, 22, 23, 24, 25, 26, 27}};
    int i = 0, j = 0, k = 0;
    for( i = 0; i <3; i++ ){
        for(k = 0; k < 3; k++ )
            printf("%d ", a[i][j][k]);
        printf("\n");
    }
    return 0;
}
```

- (A) 1 2 3
10 11 12
19 20 21
- (B) 1 4 7
10 13 16
19 22 25

- (C) 1 2 3
4 5 6
7 8 9
- (D) 1 2 3
13 1415
25 2627

Answer: (A)

[Click here to watch video explanation](#)

44. What is printed by the following ANSI C program?

```
# include <stdio.h>
Int main (int argc, char *argv[ ]) {
char a = 'P';
char b = 'x';
char c = (a & b) + '*';
char d = (a | b) - '-';
char e = (a ^ b) + '+';
printf ("%c %c %c\n", c, d, e) ;
return 0;
}
```

ASCII encoding for relevant characters is given below

A	B	C	...	Z
65	66	67	...	90

a	b	c	...	z
97	98	99	...	122

*	+	-
42	43	45

(A) z K S

(B) 122 75 83

(C) * - +

(D) P X +

Answer: (A)

[Click here to watch video explanation](#)

45. Consider solving the following system of simultaneous equations using LU decomposition.

$$x_1 + x_2 - 2x_3 = 4$$

$$x_1 + 3x_2 - x_3 = 7$$

$$2x_1 + x_2 - 5x_3 = 7$$

Where L and U are denoted as

$$L = \begin{pmatrix} L_{11} & 0 & 0 \\ L_{21} & L_{22} & 0 \\ L_{31} & L_{32} & L_{33} \end{pmatrix} \quad U = \begin{pmatrix} U_{11} & U_{12} & U_{13} \\ 0 & U_{22} & U_{23} \\ 0 & 0 & U_{33} \end{pmatrix}$$

Which one of the following is the correct combination of values for L_{32} , U_{33} , and x_1 ?

(A) $L_{32} = 2, U_{33} = -\frac{1}{2}, x_1 = -1$

(B) $L_{32} = 2, U_{33} = 2, x_1 = -1$

(C) $L_{32} = -\frac{1}{2}, U_{33} = 2, x_1 = 0$

(D) $L_{32} = -\frac{1}{2}, U_{33} = -\frac{1}{2}, x_1 = 0$

Answer: (D)

[Click here to watch video explanation](#)

46. Which of the following is/are undecidable?

(A) Given two Turing machines M_1 and M_2 , decide if $L(M_1) = L(M_2)$.

(B) Given a Turing machine M , decide if $L(M)$ is regular.

(C) Given a Turing machine M , decide if M accepts all strings.

(D) Given a Turing machine M , decide if M takes more than 1073 steps on every string.

Answer: (A, B, C)

[Click here to watch video explanation](#)

47. Consider the following languages :

$$L_1 = \{a^n w a^n \mid w \in \{a, b\}^*\}$$

$$L_2 = \{w x w^R \mid w, x \in \{a, b\}^*, |w|, |x| > 0\}$$

Note that w^R is the reversal of the string w . Which of the following is / are TRUE ?

(A) L_1 and L_2 are regular

(B) L_1 and L_2 are context-free

(C) L_1 is regular and L_2 is context-free

(D) L_1 and L_2 are context-free but not regular

Answer: (A, B, C)

[Click here to watch video explanation](#)

48. Consider the following languages:

$$L_1 = \{ww \mid w \in \{a, b\}^*\}$$

$$L_2 = \{a^n b^n c^m \mid m, n \geq 0\}$$

$$L_3 = \{a^m b^n c^n \mid m, n \geq 0\}$$

Which of the following statements is/are FALSE ?

- (A) L_1 is not context-free but L_2 and L_3 are deterministic context-free
- (B) Neither L_1 nor L_2 is context-free
- (C) L_2, L_3 and $L_2 \cap L_3$ all are context-free
- (D) Neither L_1 nor its complement is context-free

Answer: (B, C, D)

[Click here to watch video explanation](#)

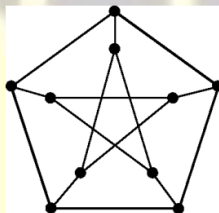
49. Consider a simple undirected weighted graph G , all of whose edge weights are distinct. Which of the following statements about the minimum spanning trees of G is/are TRUE?

- (A) The edge with the second smallest weight is always part of any minimum spanning tree of G .
- (B) One or both of the edges with the third smallest and the fourth smallest weights are part of any minimum spanning tree of G .
- (C) Suppose $S \subseteq V$ be such that $S \neq \phi$ and $S \neq V$. Consider the edge with the minimum weight such that one of its vertices is in S and the other in $V \setminus S$. Such an edge will always be part of any minimum spanning tree of G .
- (D) G can have multiple minimum spanning trees.

Answer: (A, B, C)

[Click here to watch video explanation](#)

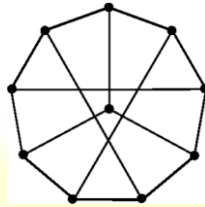
50. The following simple undirected graph is referred to as the Peterson graph.



Which of the following statements is / are TRUE?

- (A) The chromatic number of the graph is 3.
- (B) The graph has a Hamiltonian path

(C) The following graph is isomorphic to the Peterson graph.



(D) The size of the largest independent set of the given graph is 3. (A subset of vertices of a graph form an independent set if no two vertices of the subset are adjacent.)

Answer: (A, B, C)

[Click here to watch video explanation](#)

51. Consider the following recurrence:

$$f(1) = 1;$$

$$f(2n) = 2f(n) - 1, \text{ for } n \geq 1;$$

$$f(2n+1) = 2f(n) + 1, \text{ for } n \geq 1.$$

Then, which of the following statements is/are TRUE?

(A) $f(2^n - 1) = 2^n - 1$

(B) $f(2^n) = 1$

(C) $f(5 \cdot 2^n) = 2^{n+1} + 1$

(D) $f(2^n + 1) = 2^n + 1$

Answer: (A, B, C)

[Click here to watch video explanation](#)

52. Which of the properties hold for the adjacency matrix A of a simple undirected unweighted graph having n vertices?

(A) The diagonal entries of A^2 are the degrees of the vertices of the graph.

(B) If the graph is connected, then none of the entries of $A^{n-1} + I_n$ can be zero.

(C) If the sum of all the elements of A is at most $2(n-1)$, then the graph must be acyclic.

(D) If there is at least a 1 in each of A 's rows and columns, then the graph must be connected.

Answer: (A)

[Click here to watch video explanation](#)

53. Which of the following is / are the eigen vector(s) for the matrix given below ?

$$\begin{pmatrix} -9 & -6 & -2 & -4 \\ -8 & -6 & -3 & -1 \\ 20 & 15 & 8 & 5 \\ 32 & 21 & 7 & 12 \end{pmatrix}$$

(A) $\begin{pmatrix} -1 \\ 1 \\ 0 \\ 1 \end{pmatrix}$ (B) $\begin{pmatrix} 1 \\ 0 \\ -1 \\ 0 \end{pmatrix}$ (C) $\begin{pmatrix} -1 \\ 0 \\ 2 \\ 2 \end{pmatrix}$ (D) $\begin{pmatrix} 0 \\ 1 \\ -3 \\ 0 \end{pmatrix}$

Answer: (A, C, D)

[Click here to watch video explanation](#)

54. Consider a system with 2 KB direct mapped data cache with a block size of 64 bytes. The system has a physical address space of 64 KB and a word length of 16 bits. During the execution of a program, four data words P, Q, R, and S are accessed in that order 10 times (i.e., PQRSPQRS...). Hence, there are 40 accesses to data cache altogether. Assume that the data cache is initially empty and no other data words are accessed by the program. The addresses of the first bytes of P, Q, R, and S are 0xA248, 0xC28A, 0xCA8A, and 0xA262, respectively. For the execution of the above program, which of the following statements is/are TRUE with respect to the data cache?

- (A) Every access to S is a hit.
- (B) Once P is brought to the cache it is never evicted.
- (C) At the end of the execution only R and S reside in the cache.
- (D) Every access to R evicts Q from the cache.

Answer: (A, B, D)

[Click here to watch video explanation](#)

55. Consider routing table an organization's router shown below ;

Subnet Number	Subnet Mask	Next Hop
12.20.164.0	255.255.252.0	R1
12.20.170.0	255.255.254.0	R2
12.20.168.0	255.255.254.0	Interface 0
12.20.166.0	255.255.254.0	Interface 1
Default		R3

Which of the following prefixes in CIDR notation can be collectively used to correctly aggregate all of the subnets in the routing table?

- (A) 12.20.164.0/20 (B) 12.20.164.0/22 (C) 12.20.164.0/21 (D) 12.20.168.0/22

Answer: (B, D)

[Click here to watch video explanation](#)

56. Consider the relational database with the following four schemas and their respective instances.

Student (sNo, sName, dNo) Dept (dNo, dName)

Course (cNo, cName, dNo) Register (sNo, cNo)

Student		
sNo	sName	dNo
S01	James	D01
S02	Rocky	D01
S03	Jackson	D02
S04	Jane	D01
S05	Milli	D02

Dept	
dNo	dName
D01	CSE
D02	EEE

Course		
cNo	cName	dNo
C11	DS	D01
C12	OS	D01
C21	DE	D02
C22	PT	D02
C23	CV	D03

Register	
sNo	cNo
S01	C11
S01	C12
S02	C11
S03	C21
S03	C22
S03	C23
S04	C11
S04	C12
S05	C11
S05	C21

SQL Query:

```
SELECT * FROM Student AS S WHERE NOT EXIST
```

```
(SELECT cNo FROM Course WHERE dNo = "D01"
```

```
EXCEPT
```

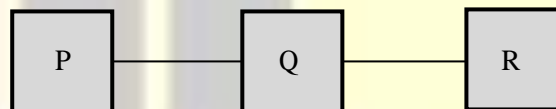
```
SELECT cNo FROM Register WHERE sNo = S.sNo)
```

The number of rows returned by the above SQL query is _____.

Answer: (2)

[Click here to watch video explanation](#)

57. Consider a network with three routers P, Q, R shown in the figure below. All the links have cost of unity.



The routers exchange distance vector routing information and have converged on the routing tables, after which the link Q–R fails. Assume that P and Q send out routing updates at random times, each at the same average rate. The probability of a routing loop formation (rounded off to one decimal place) between P and Q, leading to count-to-infinity problem, is _____.

Answer: (0.5 to 0.5)

[Click here to watch video explanation](#)

58. Let $G(V,E)$ be a directed graph, where $V = \{1,2,3,4,5\}$ is the set of vertices and E is the set of directed edges, as defined by the following adjacency matrix A .

$$A[i][j] = \begin{cases} 1, & 1 \leq j \leq i \leq 5 \\ 0, & \text{otherwise} \end{cases}$$

$A[i][j] = 1$ indicates a directed edge from node i to node j . A directed spanning tree of G , rooted at $r \in V$, is defined as a subgraph T of G such that the undirected version of T is a tree, and T contains a directed path from r to every other vertex in V . the number of such directed spanning trees rooted at vertex 5 is _____.

Answer: (24 to 24)

[Click here to watch video explanation](#)

59. Consider a 100 Mbps link between an earth station (sender) and a satellite (receiver) at an altitude of 2100 km. The signal propagates at a speed of 3×10^8 m/s. The time taken (in milliseconds, rounded off to two decimal places) for the receiver to completely receive a packet of 1000 bytes transmitted by the sender is _____.

Answer: (7.07 to 7.09)

[Click here to watch video explanation](#)

60. Consider the data transfer using TCP over a 1 Gbps link. Assuming that the maximum segment lifetime (MSL) is set to 60 seconds, the minimum number of bits required for the sequence number field of the TCP header, to prevent the sequence number space from wrapping around during the MSL is _____.

Answer: (33 to 33)

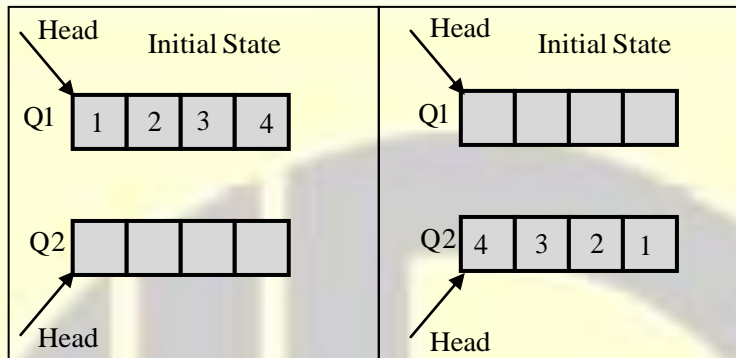
[Click here to watch video explanation](#)

61. A processor X_1 operating at 2 GHz has a standard 5-stage RISC instruction pipeline having a base CPI (cycles per instruction) of one without any pipeline hazards. For a given program P that has 30% branch instructions, control hazards incur 2 cycles stall for every branch. A new version of the processor X_2 operating at same clock frequency has an additional branch predictor unit (BPU) that completely eliminates stalls for correctly predicted branches. There is neither any savings nor any additional stalls for wrong predictions. There are no structural hazards and data hazards for X_1 and X_2 . If the BPU has a prediction accuracy of 80%, the speed up (rounded off to two decimal places) obtained by X_2 over X_1 in executing P is _____.

Answer: (1.42 to 1.45)

[Click here to watch video explanation](#)

62. Consider the queues Q_1 containing four elements and Q_2 containing none (shown as the initial State in the figure). The only operations allowed on these two queues are Enqueue (Q , element) and Dequeue (Q). The minimum number of Enqueue operations on Q_1 required to place the elements of Q_1 in Q_2 in reverse order (shown as the final state in the figure) without using any additional storage is _____.



Answer: (0 to 0)

[Click here to watch video explanation](#)

63. Consider two file systems A and B, that use contiguous allocation and linked allocation, respectively. A file of size 100 blocks is already stored in A and also in B. Now, consider inserting a new block in the middle of the file (between 50th and 51st block), whose data is already available in the memory. Assume that there are enough free blocks at the end of the file and that the file control blocks are already in memory. Let the number of disk accesses required to insert a block in the middle of the file in A and B are n_A and n_B , respectively, then the value of $n_A + n_B$ is _____.

Answer: (153 to 153)

[Click here to watch video explanation](#)

64. Consider a demand paging system with four page frames (initially empty) and LRU page replacement policy. For the following page reference string

7,2,7,3,2,5,3,4,6,7,7,1,5,6,1

the page fault rate, defined as the ratio of number of page faults to the number of memory accesses (rounded off to one decimal place) is _____.

Answer: (0.6 to 0.6)

[Click here to watch video explanation](#)

65. Consider the following grammar along with translation rules.

$$S \rightarrow S_1 \# T \quad \{S_{.val} = S_{1.val} * T_{.val}\}$$

$$S \rightarrow T \quad \{S_{.val} = T_{.val}\}$$

$$T \rightarrow T_1 \% R \quad \{T_{.val} = T_{1.val} \div R_{.val}\}$$

$$T \rightarrow R \quad \{T_{.val} = R_{.val}\}$$

$$R \rightarrow id \quad \{R_{.val} = id_{.val}\}$$

Her # and % are operators and id is a token that represents an integer and $id_{.val}$ represents the corresponding integer value. The set of non-terminals is {S,T,R,P} and a subscripted non-terminal indicates an instance of the non-terminal.

Using this translation scheme, the computed value of $S_{.val}$ for root of the parse tree for the expression $20\#10\%5\#8\%2\%2$ is _____.

Answer: (80 to 80)

[Click here to watch video explanation](#)





Follow us @



For more details visit gateforumonline.com