

GENERAL APTITUDE

Q. No. 1 - 5 Carry One Mark Each

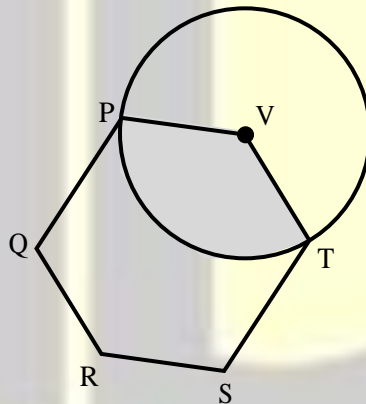
1. "I have not yet decided what I will do this evening; I _____ visit a friend."
(A) mite (B) would (C) might (D) didn't

Answer: (C) [Click here to watch video explanation](#)

2. Eject : Insert :: Advance : _____
(By word meaning)
(A) Advent (B) Progress (C) Retreat (D) Loan

Answer: (C) [Click here to watch video explanation](#)

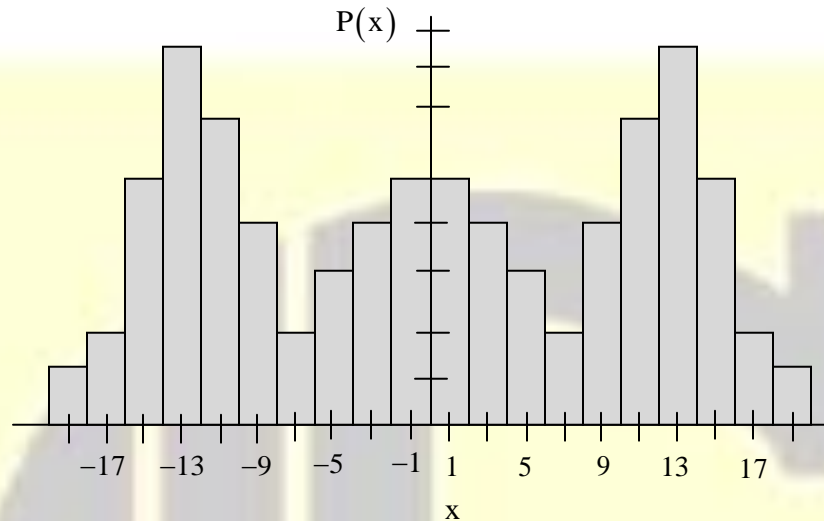
3. In the given figure, PQRSTV is a regular hexagon with each side of length 5 cm. A circle is drawn with its centre at V such that it passes through P. What is the area (in cm²) of the shaded region? (The diagram is representative).



- (A) $\frac{25\pi}{3}$ (B) $\frac{20\pi}{3}$ (C) $\theta\pi$ (D) 7π

Answer: (A) [Click here to watch video explanation](#)

7. Which one of the options can be inferred about the mean, median, and mode for the given probability distribution (i.e., probability mass function), $P(x)$, of a variable x ?



- (A) mean = median \neq mode
 (B) mean = median = mode
 (C) mean \neq median = mode
 (D) mean \neq mode = median

Answer: (A)

[Click here to watch video explanation](#)

8. The James Webb telescope, recently launched in space, is giving humankind unprecedented access to the depths of time by imaging very old stars formed almost 13 billions year ago. Astrophysicists and cosmologists believe that this odyssey in space may even shed light on the existence of dark matter. Dark matter is supposed to interact only via the gravitational interaction and not through the electromagnetic-, the weak- or the strong interaction. This may justify the epithet “dark” in dark matter.

- (A) No other telescope has capture images of stars older than those captures by the James Webb telescope
 (B) People other than astrophysicists and cosmologists may also believe in the existence of dark matter
 (C) The James Webb telescope could be of use in the research on dark matter.
 (D) If dark matter was known to interact via the strong-interaction, then the epithet “dark” would be justified

Answer: (D)

[Click here to watch video explanation](#)

9. Let $a = 30!$, $B = 50!$, and $c = 100!$. Consider the following numbers:

$$\log_a c, \log_c a, \log_b a, \log_a b$$

Which one of the following inequalities is CORRECT?

- (A) $\log_c a < \log_b a < \log_a c < \log_a b$ (B) $\log_c a < \log_a b < \log_b a < \log_b c$
 (C) $\log_c a < \log_b a < \log_a c < \log_a b$ (D) $\log_b a < \log_c a < \log_a b < \log_a c$

Answer: (A)

[Click here to watch video explanation](#)

10. A square of side length 4 cm is given. The boundary of the shaded region is defined by one semi-circled on the top and two circular arcs at the bottom, each of radius of 2 cm, as shown.

The area of the shaded region is _____ cm^2 .



- (A) 8 (B) 4 (C) 12 (D) 10

Answer: (A)

[Click here to watch video explanation](#)

13. Creep of concrete under compression is defined as the _____
- (A) increase in the magnitude of strain under constant stress
 - (B) increase in the magnitude of stress under constant strain
 - (C) decrease in the magnitude of strain under constant stress
 - (D) decrease in the magnitude of stress under constant strain

Answer: (A)

[Click here to watch video explanation](#)

14. A singly reinforced concrete beam of balanced section is made of M20 grade concrete and Fe415 grade steel bars. The magnitudes of the maximum compressive strain in concrete and the tensile strain in the bars at ultimate state under flexure, as per IS 456: 2000 are _____, respectively. (round off to four decimal places)
- (A) 0.0035 and 0.0038
 - (B) 0.0020 and 0.0018
 - (C) 0.0035 and 0.0041
 - (D) 0.0020 and 0.0031

Answer: (A)

[Click here to watch video explanation](#)

15. In cement concrete mix design, with the increase in water-cement ratio, which one of the following statements is TRUE?
- (A) Compressive strength decreases but workability increase
 - (B) Compressive strength increases but workability decreases
 - (C) Both compressive strength and workability decrease
 - (D) Both compressive strength and workability increase

Answer: (A)

[Click here to watch video explanation](#)

16. The specific gravity of a soil is 2.60. The soil is at 50% degree of saturation with a water content of 15%. The void ratio of the soil is _____ .
- (A) 0.35
 - (B) 0.78
 - (C) 0.87
 - (D) 1.28

Answer: (B)

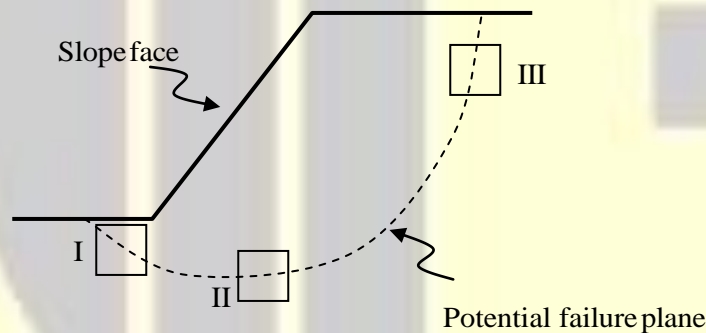
[Click here to watch video explanation](#)

17. A group of 9 friction piles are arranged in a square grid maintaining equal spacing in all directions. Each pile is of diameter 300 mm and length 7 m. Assume that the soil is cohesionless with effective friction angle $\phi' = 32^\circ$. What is the center-to-center spacing of the piles (in m) for the pile group efficiency of 60%?
- (A) 0.582 (B) 0.486 (C) 0.391 (D) 0.677

Answer: (B)

[Click here to watch video explanation](#)

18. A possible slope failure is shown in the figure. Three soil samples are taken from different locations (I, II and III) of the potential failure plane. Which is the most appropriate shear strength test for each of the sample to identify the failure mechanism? Identify the correct combination from the following options:
- P: Triaxial compression test
 Q: Triaxial extension test
 R: Direct shear or shear box test
 S: Vane shear test



- (A) I-Q, II-R, III-P (B) I-R, II-P, III-Q
 (C) I-S, II-Q, III-R (D) I-P, II-R, III-Q

Answer: (A)

[Click here to watch video explanation](#)

19. When a supercritical stream enters a mild-sloped (M) channel section, the type of flow profile would become _____
- (A) M_1 (B) M_2 (C) M_3 (D) M_1 and M_2

Answer: (C)

[Click here to watch video explanation](#)

20. Which one of the following statements is TRUE for Greenhouse Gas (GHG) in the atmosphere?
- (A) GHG absorbs the incoming short wavelength solar radiation to the earth surface, and allows the long wavelength radiation coming from the earth surface to pass through.
 - (B) GHG allows the incoming long wavelength solar radiation to pass through to the earth surface, and absorbs the short wavelength radiation coming from the earth surface.
 - (C) GHG allows the incoming long wavelength solar radiation to pass through to the earth surface, and allows the short wavelength of radiation coming from the earth surface to pass through
 - (D) GHG allows the incoming short wavelength solar radiation to pass through to the earth surface, and absorbs the long wavelength radiation coming from the earth.

Answer: (D)

[Click here to watch video explanation](#)

21. G_1 and G_2 are the slopes of the approach and departure grades of a vertical curve, respectively.

Given $|G_1| < |G_2|$ and $|G_1| \neq |G_2| \neq 0$

Statement 1: $+G_1$ followed by $+G_2$ results in a sag vertical curve.

Statement 2: $-G_1$ followed by $-G_2$ results in a sag vertical curve.

Statement 3: $+G_1$ followed by $-G_2$ results in a crest vertical curve.

Which option amongst the following is true?

- (A) Statement 1 and Statement 3 are correct; Statement 2 is wrong
- (B) Statement 1 and Statement 2 are correct; Statement 3 is wrong
- (C) Statement 1 is correct; Statement 2 and Statement 3 are wrong
- (D) Statement 2 is correct; Statement 1 and Statement 3 are wrong

Answer: (A)

[Click here to watch video explanation](#)

22. The direct and reversed zenith angles observed by a theodolite are $56^\circ 00' 00''$ and $303^\circ 00' 00''$, respectively. What is the vertical collimation correction?

- (A) $+1^\circ 00' 00''$
- (B) $-1^\circ 00' 00''$
- (C) $-0^\circ 30' 00''$
- (D) $+0^\circ 30' 00''$

Answer: (D)

[Click here to watch video explanation](#)

23. A student is scanning his 10 inch \times 10 inch certificate at 600 dots per inch (dpi) to convert it to raster. What is the percentage reduction in number of pixels if the same certificate is scanned at 300 dpi?
- (A) 62 (B) 88 (C) 75 (D) 50

Answer: (C)

[Click here to watch video explanation](#)

24. If M is an arbitrary real $n \times n$ matrix, then which of the following matrices will have non-negative eigen values?
- (A) M^2 (B) MM^T (C) $M^T M$ (D) $(M^T)^2$

Answer: (B, C)

[Click here to watch video explanation](#)

25. The following function is defined over the interval $[-L, L]$:

$$f(x) = px^4 + qx^5$$

If it is expressed as a Fourier series,

$$f(x) = a_0 + \sum_{n=1}^{\infty} \left\{ a_n \sin\left(\frac{\pi X}{L}\right) + b_n \cos\left(\frac{\pi X}{L}\right) \right\},$$

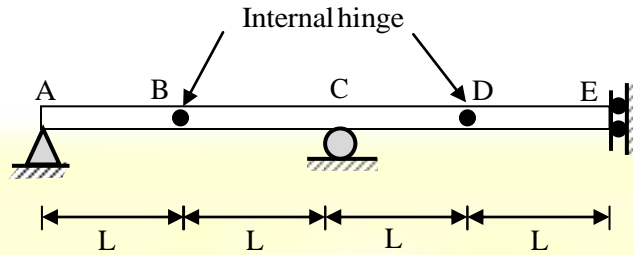
Which options amongst the following are true?

- (A) $a_n, n = 1, 2, \dots, \infty$ depend on p
(B) $a_n, n = 1, 2, \dots, \infty$ depend on q
(C) $b_n, n = 1, 2, \dots, \infty$ depend on p
(D) $b_n, n = 1, 2, \dots, \infty$ depend on q

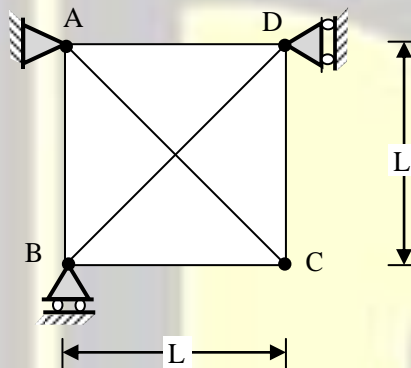
Answer: (B, C)

[Click here to watch video explanation](#)

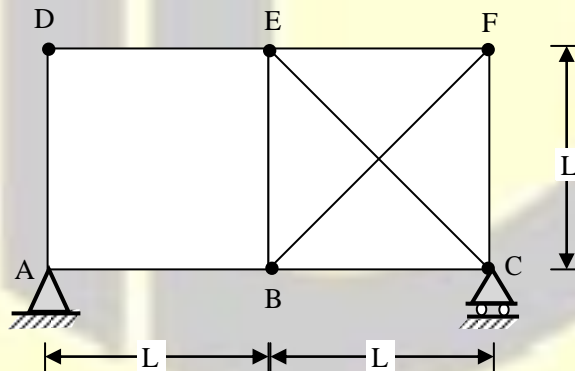
26. Consider the following three structures:



Structure I: Beam with hinge support at A, roller at C, guided roller at E, and internal hinges at B and D.



Structure II: Pin-jointed truss, with hinge support at A, and rollers at B and D.



Structure III: Pin-jointed truss, with hinge support at A and roller at C.

Which of the following statements is/are TRUE?

- (A) Structure I is unstable
- (B) Structure II is unstable
- (C) Structure III is unstable
- (D) All three structures are stable

Answer: (A, B, C)

[Click here to watch video explanation](#)

27. Identify the waterborne diseases caused by viral pathogens:
- (A) Acute anterior poliomyelitis (B) Cholera
(C) Infectious hepatitis (D) Typhoid fever

Answer: (A, C)

[Click here to watch video explanation](#)

28. Which of the following statements is/are TRUE for the Refuse-Derived Fuel (RDF) in the context of Municipal Solid Waste (MSW) management?
- (A) Higher Heating Value (HHV) of the unprocessed MSW is higher than the HHV of RDF processed from the same MSW.
(B) RDF can be made in the powdered form
(C) Inorganic fraction of MSW is mostly converted to RDF.
(D) RDF cannot be used in conjunction with oil

Answer: (B)

[Click here to watch video explanation](#)

29. The probabilities of occurrences of two independent events A and B are 0.5 and 0.8, respectively. What is the probability of occurrence of at least A or B (rounded off to one decimal place)? _____

Answer: (0.9 to 0.9)

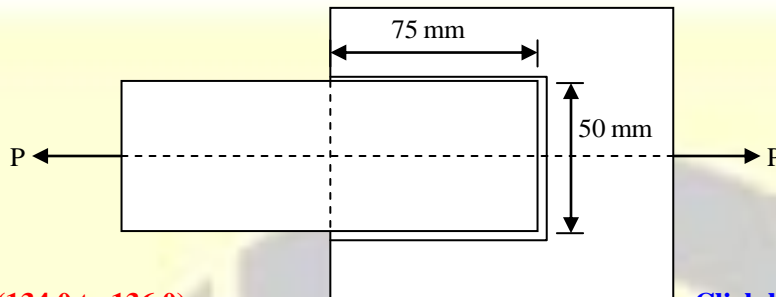
[Click here to watch video explanation](#)

30. In the differential equation $\frac{dy}{dx} + axy = 0$, a is positive constant. If $y = 1.0$ at $x = 0.0$, and $y = 0.8$ at $x = 1.0$, the value of a is _____ (rounded off to three decimal places).

Answer: (0.045 to 0.047)

[Click here to watch video explanation](#)

31. Consider the fillet-welded lap joint shown in the figure (Not to scale). The length of the weld shown in the effective length. The welded surface meet at right angle. The weld size is 8 mm, and the permissible stress in the weld is 120MPa. What is the safe load P (in kN, rounded off to one decimal place) that can be transmitted by this welded joint?



Answer: (134.0 to 136.0)

[Click here to watch video explanation](#)

32. A drained direct shear test was carried out on a sandy soil. Under a normal stress of 50 kPa, the test specimen failed at shear stress of 35 kPa. The angle of internal friction of the sample is _____ degree (round off to the nearest integer).

Answer: (35 to 35)

[Click here to watch video explanation](#)

33. A canal supplies water to an area growing wheat over 100 hectares. The duration between the first and last watering is 120 days, and the total depth of water required by the crop is 35 cm. The most intense watering is required over a period of 30 days and requires a total depth of water equal to 12 cm. Assuming precipitation to be negligible and neglecting all losses, the minimum discharge (in m³/s, rounded off to three decimal places) in the canal to satisfy the crop requirement is _____.

Answer: (0.045 to 0.047)

[Click here to watch video explanation](#)

34. The ordinates of a one-hour unit hydrograph for a catchment are given below :

t(hour)	0	1	2	3	4	5	6	7
Q(m³/s)	0	9	21	18	12	5	2	0

Using the principle of superposition, a D-hour unit hydrograph for the catchment was derived from the one-hour unit hydrograph. The ordinate of the D-hour unit hydrograph were obtained as 3 m³/s at t = 1 hour and 10 m³/s at t = 2 hour. the value of D (in integer) is _____.

Answer: (3 to 3)

[Click here to watch video explanation](#)

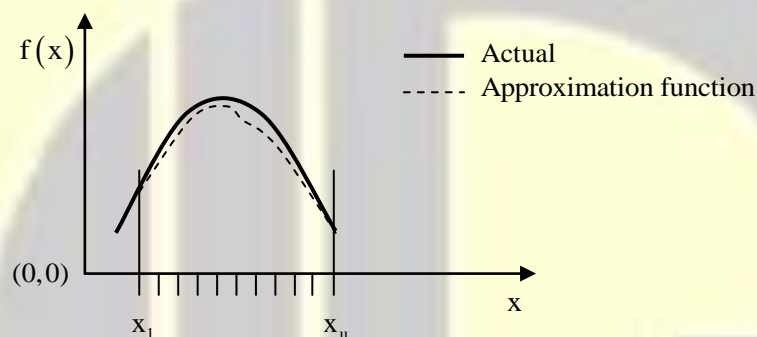
35. For a horizontal curve, the radius of a circular curve is obtained as 300 m with the design speed as 15 m/s. If the allowable jerk is 0.75 m/s^3 , what is the minimum length (in m, in integer) of the transition curve ? _____.

Answer: (15 to 15)

[Click here to watch video explanation](#)

Q. No. 36-65 Carry One Mark Each

36. A function $f(x)$, that is smooth and convex-shaped between interval (x_1, x_u) is shown in the figure. This function is observed at odd number of regularly spaced points. If the area under the function is computed numerically, then _____.



- (A) the numerical value of the area obtained using the trapezoidal rule will be less than the actual.
 (B) the numerical value of the area obtained using the trapezoidal rule will be more than the actual.
 (C) the numerical value of the area obtained using the trapezoidal rule will be exactly equal to the actual.
 (D) with the given details, the numerical value of area cannot be obtained using trapezoidal rule

Answer: (A)

[Click here to watch video explanation](#)

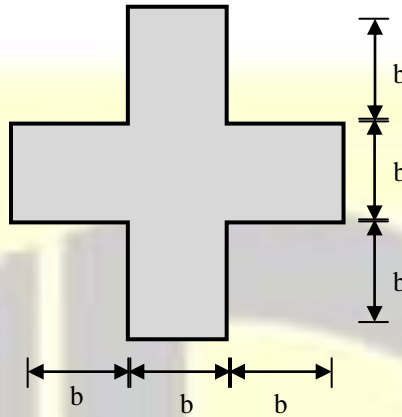
37. Consider a doubly reinforced RCC beam with the option of using either Fe250 plain bars or Fe500 deformed bars in the compression zone. The modulus of elasticity of steel is $2 \times 10^5 \text{ N/mm}^2$. As per IS456-2000, in which type(s) of the bars, the stress in the compression steel (f_{sc}) can reach the design strength ($0.87 f_y$) at the limit state of collapse?

- (A) Fe250 plain bars only
 (B) Fe500 deformed bars only
 (C) Both Fe250 plain bars and Fe500 deformed bars
 (D) Neither Fe250 plain bars nor Fe500 deformed bars.

Answer: (A)

[Click here to watch video explanation](#)

38. Consider the horizontal axis passing through the centroid of the steel beam cross-section shown in the figure. What is the shape factor (rounded off to one decimal place) for the cross-section ?

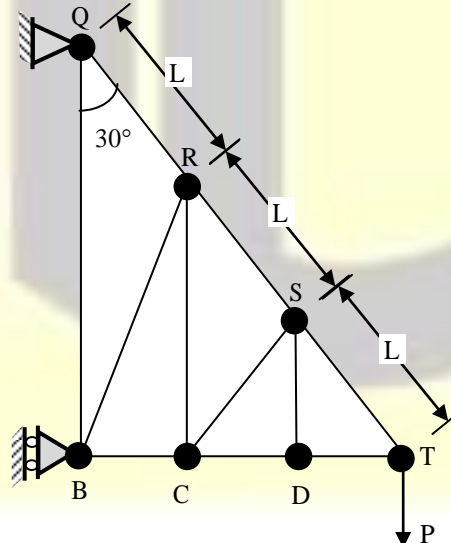


- (A) 1.5 (B) 1.7 (C) 1.3 (D) 2.0

Answer: (B)

[Click here to watch video explanation](#)

39. Consider the pin-jointed truss shown in the figure (not to scale). All members have the same axial rigidity, AE . Members QR , RS , and ST have the same length L . Angles OBT , RCT , SDT are all 90° . Angles BQT , CRT , DST are all 30° . The joint T carries a vertical load P . The vertical deflection of joint T is $k \frac{PL}{AE}$. What is the value of k ?



- (A) 1.5 (B) 4.5 (C) 3.0 (D) 9.0

Answer: (B)

[Click here to watch video explanation](#)

40. With reference to the compaction test conducted on soils, which of the following is INCORRECT?
- (A) Peak point of the compaction curve gives the maximum dry unit weight and optimum moisture content.
 - (B) With increase in the compaction effort, the maximum dry unit weight increases.
 - (C) With increase in the compaction effort, the optimum moisture content decreases.
 - (D) Compaction curve cross the zero-air-voids curve.

Answer: (D)

[Click here to watch video explanation](#)

41. Consider that a force P is acting on the surface of a half-space (Boussinesq's problem). The expression for the vertical stress (σ_z) at any point (r, z) with the half-space is given as,

$$\sigma_z = \frac{3P}{2\pi} \frac{z^3}{(r^2 + z^2)^{5/2}}$$

Where, r is the radial distance, and z is the depth with downward direction taken as positive. At any given r, there is a variation of σ_z along z, and at a specific z, the value of σ_z will be maximum. What is the locus of the maximum σ_z ?

- (A) $z^2 = \frac{3}{2}r^2$ (B) $z^3 = \frac{3}{2}r^2$ (C) $z^2 = \frac{5}{2}r^2$ (D) $z^3 = \frac{5}{2}r^2$

Answer: (A)

[Click here to watch video explanation](#)

42. A square footing of size 2.5 m × 2.5 m is placed 1.0 m below the ground surface on a cohesion homogeneous soil stratum. Considering that the groundwater table is located at the base of the footing, the unit weights of soil above and below the groundwater table are 18 kN/m³ and 20 kN/m³, respectively, and the bearing capacity factor N_q is 58, the net ultimate bearing capacity of the soil is estimated as 1706 kPa (unit weight of water 10 kN/m³).

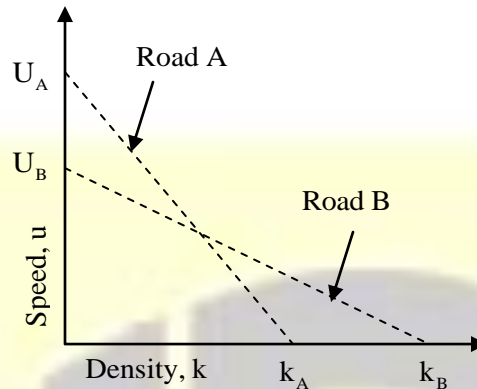
Earlier, a plate load test was carried out with a circular plate of 30 cm diameter in the same foundation pit during a dry season, when the water table was located beyond the plate influence zone. Using Terzaghi's bearing capacity formulation, what is the ultimate bearing capacity (in kPa) of the plate ?

- (A) 110.16 (B) 61.20 (C) 204.00 (D) 163.20

Answer: (A)

[Click here to watch video explanation](#)

46. A plot of speed-density relationship (linear) of two roads (Road A and Road B) is shown in the figure.



If the capacity of Road A is C_A and the capacity of Road B is C_B , what is $\frac{C_A}{C_B}$?

- (A) $\frac{k_A}{k_B}$ (B) $\frac{u_A}{u_B}$ (C) $\frac{k_A u_A}{k_B u_B}$ (D) $\frac{k_A u_B}{k_B u_A}$

Answer: (C)

[Click here to watch video explanation](#)

47. For the matrix $[A] = \begin{bmatrix} 1 & 2 & 3 \\ 3 & 2 & 1 \\ 3 & 1 & 2 \end{bmatrix}$

Which of the following statements is/are TRUE?

- (A) The eigen values of $[A]^T$ are same as the eigen values of $[A]$
 (B) The eigen values of $[A]^{-1}$ are the reciprocals of the eigen values of $[A]$
 (C) The eigenvectors of $[A]^T$ are same as the eigenvectors of $[A]$
 (D) The eigenvectors of $[A]^{-1}$ are same as the eigenvectors of $[A]$

Answer: (A, B, D)

[Click here to watch video explanation](#)

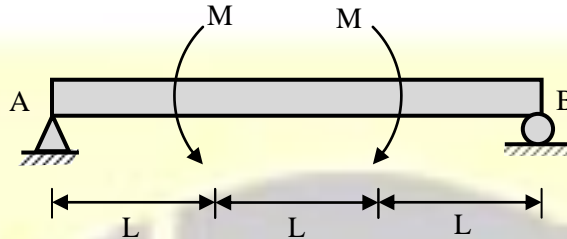
48. For the function $f(x) = e^x |\sin x|$; $x \in \mathbf{R}$, following statements is/are TRUE?

- (A) The function is continuous at all x
 (B) The function is differentiable at all x
 (C) The function is periodic
 (D) The function is bounded

Answer: (A)

[Click here to watch video explanation](#)

49. Consider the beam shown in the figure (not to scale), on a hinge support at end A and a roller support at end B. The beam has a constant flexural rigidity, and is subjected to the external moments of magnitude M at one-third spans, as shown in the figure. Which of the following statements is/are TRUE?



- (A) Support reactions are zero
 (B) Shear force is zero everywhere
 (C) Bending moment is zero everywhere
 (D) Deflection is zero everywhere

Answer: (A, B)

[Click here to watch video explanation](#)

50. Which of the following statements is/are TRUE in relation to the maximum mixing depth (or Height) ' D_{max} ' in the atmosphere?
- (A) D_{max} is always equal to the height of the layer of unstable air
 (B) Ventilation coefficient depends on D_{max}
 (C) A smaller D_{max} will have a smaller air pollution potential if other meteorological conditions remain same
 (D) Vertical dispersion of pollutants occurs up to D_{max}

Answer: (B, D)

[Click here to watch video explanation](#)

51. Which of the following options match the test reporting conventions with the given material tests in the table?

Test reporting convention	Material test
P. Reported as ratio	I. Solubility of bitumen
Q. Reported as percentage	II. Softening point of bitumen
R. Reported in temperature	III. Los Angeles abrasion test
S. Reported in length	IV. Flash point of bitumen

	V.	Ductility of bitumen
	VI.	Specific gravity of bitumen
	VII.	Thin film oven test

(A) P-VI, Q-I, R-II, S-VII

(B) P-VI, Q-III, R-IV, S-V

(C) P-VI, Q-I, R-II, S-V

(D) P-VI, Q-III, R-IV, S-VII

Answer: (B, C)

[Click here to watch video explanation](#)

52. The differential equation,

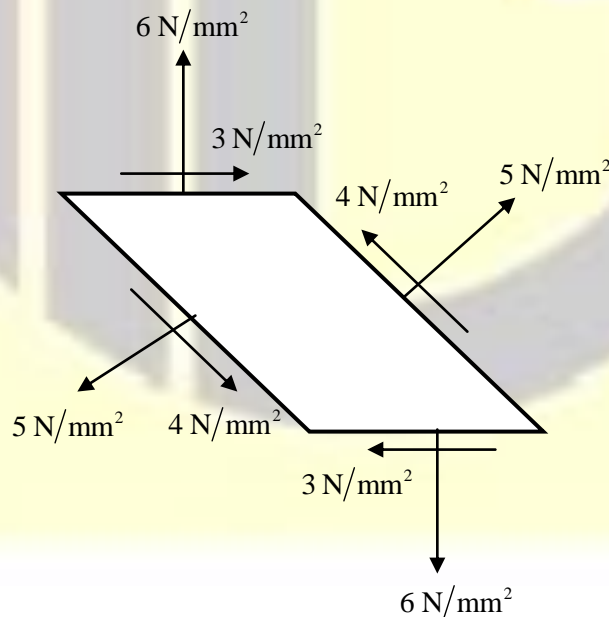
$$\frac{du}{dt} + 2tu^2 = 1,$$

is solved by employing a backward difference scheme within the finite difference framework. The value of u at the $(n-1)^{\text{th}}$ time-step, for some n , is 1.75. The corresponding time (t) is 3.14s. Each time step is 0.01 s long. Then, the value of $(u_n - u_{n-1})$ is _____ (round off to three decimal places).

Answer: (-0.152 to -0.149)

[Click here to watch video explanation](#)

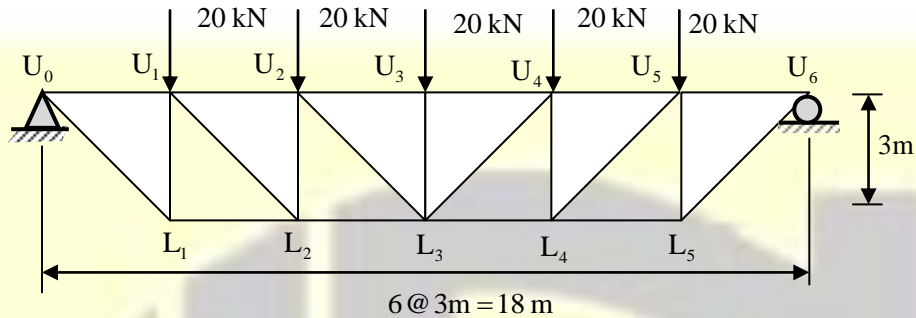
53. The infinitesimal element shown in the figure (not to scale) represents the state of stress at a point in a body. What is the magnitude of the maximum principal stress (in N/mm^2 , in integer) at the point?



Answer: (7 to 7)

[Click here to watch video explanation](#)

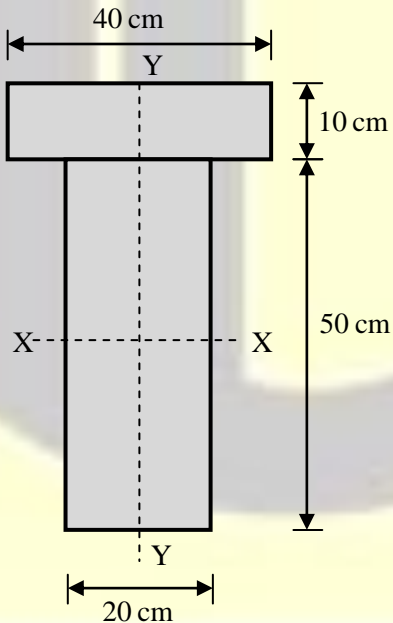
54. An idealised bridge truss is shown in the figure. The force in Member U_2L_3 is _____ kN (round off to one decimal place)



Answer: (13.5 to 14.5)

[Click here to watch video explanation](#)

55. The cross-section of a girder is shown in the figure (not to scale). The section is symmetric about a vertical axis (Y-Y). The moment of inertia of the section about the horizontal axis (X-X) passing through the centroid is _____ cm^4 (round off to nearest integer).



Answer: (464000 to 472000)

[Click here to watch video explanation](#)

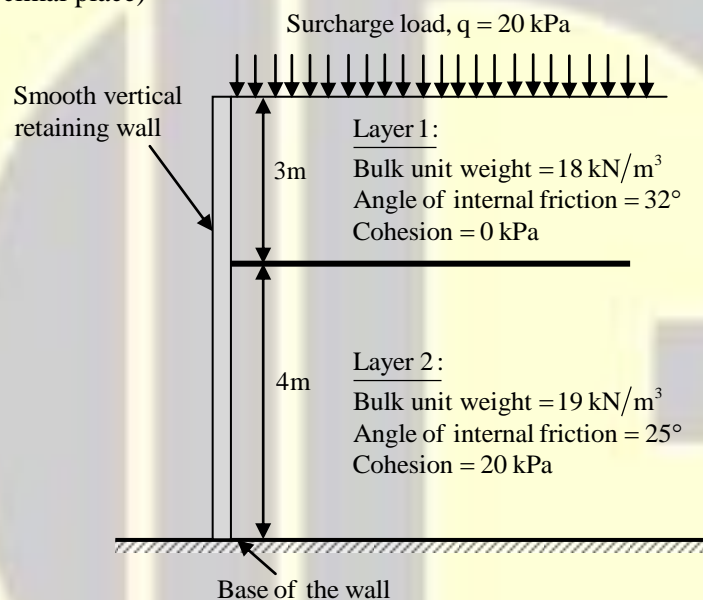
56. A soil having the average properties, bulk unit weight = 19 kN/m^3 ; angle of internal friction = 25° and cohesion = 15 kPa , is being formed on a rock slope existing at an inclination of 35° with the horizontal. The critical height (in m) of the soil formation up to which it would be stable without any failure is _____ (round off to one decimal place).

[Assume the soil is being formed parallel to the rock bedding plane and there is no ground water effect.]

Answer: (4.8 to 5.2)

[Click here to watch video explanation](#)

57. A smooth vertical retaining wall supporting layered soils is shown in figure. According to Rankine's earth pressure theory, the lateral active earth pressure acting at the base of the wall is _____ kPa (round off to one decimal place)



Answer: (34.0 to 37.0)

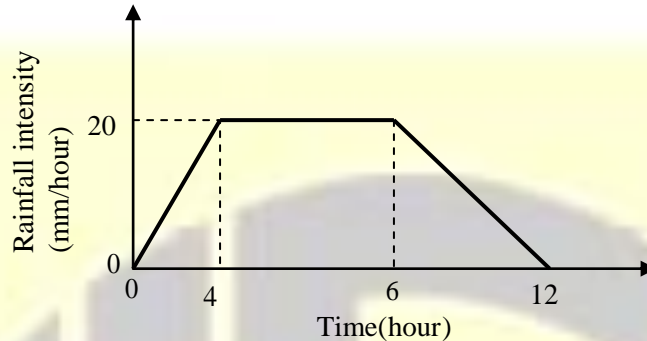
[Click here to watch video explanation](#)

58. A vertical trench is excavated in a clayey soil deposit having a surcharge load of 30 kPa . A fluid of unit weight 12 kN/m^3 is poured in the trench to prevent collapse as the excavation proceeds. Assume that the fluid is not seeping through the soil deposit. If the undrained cohesion of the clay deposit is 20 kPa and saturated unit weight is 18 kN/m^3 , what is the maximum depth of unsupported excavation (in m, rounded off to two decimal places) ? _____

Answer: (3.30 to 3.35)

[Click here to watch video explanation](#)

59. A 12-hour storm occurs over a catchment and results in a direct runoff depth of 100mm. The time-distribution of the rainfall intensity is shown in the figure (not to scale). The ϕ -index of the storm is (in mm, rounded off to two decimal places) _____.



Answer: (3.59 to 3.61 OR 39.9 to 40.1)

[Click here to watch video explanation](#)

60. A hydraulic jump occurs in a 1.0 m wide horizontal, frictionless, rectangular channel, with a pre-jump depth of 0.2 m and a post-jump depth of 1.0 m. The value of g may be taken as 10 m/s^2 . The values of the specific force at the pre-jump and post-jump sections are same and are equal to (in m^3 , rounded off to two decimal places) _____.

Answer: (0.60 to 0.64)

[Click here to watch video explanation](#)

61. In Horton's equation fitted to the infiltration data for a soil, the initial infiltration capacity is 10 mm/h; final infiltration capacity is 5 mm/h; and the exponential decay constant is 0.5 /h. Assuming that the infiltration takes place at capacity rates, the total infiltration depth (in mm) from a uniform storm of duration 12 h is _____. (round off to one decimal place)

Answer: (69.7 to 70.1)

[Click here to watch video explanation](#)

62. The composition and energy content of a representative solid waste sample are given in the table. If the moisture content of the waste is 26%, the energy content of the solid waste on dry-weight basis is _____ MJ/kg (round off to one decimal place).

Component	Percent by mass	Energy content as-discarded basis (MJ/kg)
Food waste	20	4.5
Paper	45	16.0
Cardboard	5	14.0

Plastics	10	32.0
Others	20	8.0

Answer: (18.0 to 19.0)

[Click here to watch video explanation](#)

63. A flocculator tank has a volume of 2800 m^3 . The temperature of water in the tank is 15°C , and the average velocity gradient maintained in the tank is $100/\text{s}$. The temperature of water is reduced to 5°C , but all other operating conditions including the power input are maintained as the same. The decrease in the average velocity gradient (in%) due to the reduction in water temperature is _____ (round off to nearest integer). [Consider dynamic viscosity of water at 15°C and 5°C as $1.139 \times 10^{-3} \text{ N-s/m}^2$ and $1.518 \times 10^{-3} \text{ N-s/m}^2$, respectively]

Answer: (12 to 15)

[Click here to watch video explanation](#)

64. The wastewater inflow to an activated sludge plant is $0.5 \text{ m}^3/\text{s}$, and the plant is to be operated with a food to microorganism ratio of 0.2 mg/mg-d . The concentration of influent biodegradable organic matter of the wastewater to the plant (after primary settling) is 150 mg/L , and the mixed liquor volatile suspended solids concentration to be maintained in the plant is 2000 mg/L . Assuming that complete removal of biodegradable organic matter in the tank, the volume of aeration tank (in m^3 , in integer) required for the plant is _____.

Answer: (16200 to 16200)

[Click here to watch video explanation](#)

65. Trigonometric levelling was carried out from two stations P and Q to find the reduced level (R.L.) of the top of hillock, as shown in the table. The distance between stations P and Q is 55m . Assume stations P and Q, and the hillock are in the same vertical plane. The R. L. of the top of the hillock (in m) is _____ (round off to three decimal places).

Station	Vertical angle of the top of hillock	Staff reading on benchmark	R.L. of benchmark
P	$18^\circ 45'$	2.340m	100.000m
Q	$12^\circ 45'$	1.660m	

Answer: (137.500 to 137.700)

[Click here to watch video explanation](#)

